

SIBAINDUS

Next-Gen Fabrication Solutions

PROFILE

METAL FABRICATION

SIBA HIGH-TECH MECHANICAL GROUP JOINT STOCK COMPANY

SIBA GROUP

INTRODUCTION

Siba High-Tech Mechanical Group Joint Stock Company (Siba Group) was established in 2015. The company is a multi-industry manufacturing and business enterprise, evolving on the foundation of the mechanical engineering and construction sectors. The three main areas of operation for Siba Group:

- Construction mechanics (SIBACONS).
- Agricultural mechanics (SIBAGRI).
- Environmental mechanics (SIBAECO).
- Industrial mechanics (SIBAINDUS).
- Furniture and refrigeration (SIBA Furniture & Refrigeration).



NETWORK OF FACTORIES

The high-tech mechanical factory network of Siba Group is distributed across various provinces and cities in Vietnam, including Bac Lieu, Ba Ria-Vung Tau, the Central region, and the Northern region.



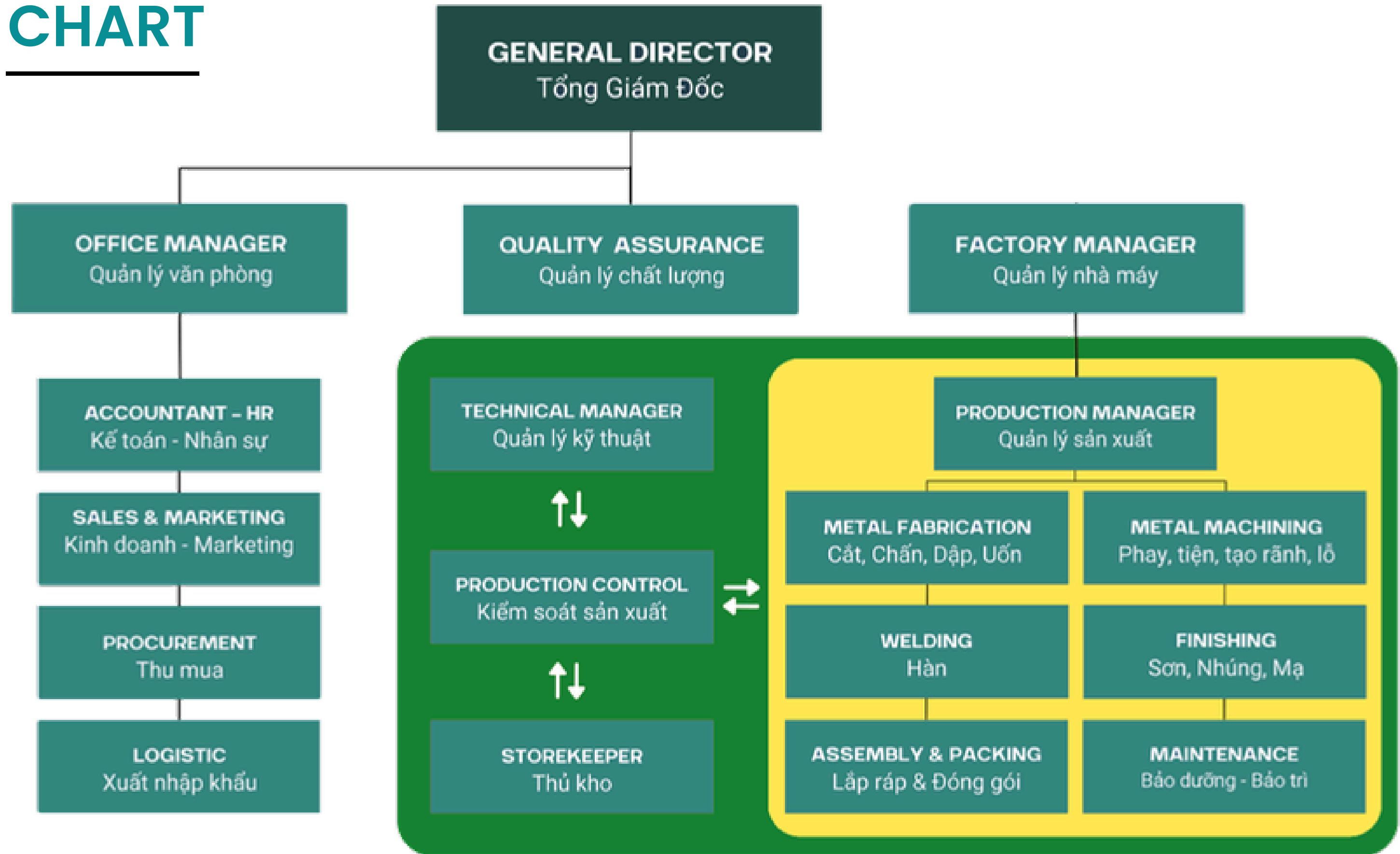
2nd

2026 Automated High-Tech Sheet Metal Fabrication (International OEM Projects, Automotive Industry, Food & Beverage Machinery, HVAC system) **(30,000 m2)**

1st

2019 Agriculture Equipment and High-Tech Farming Solutions (Dry System and Silo Solutions, High-Tech Pig Farming) **(15.000 m2)**.

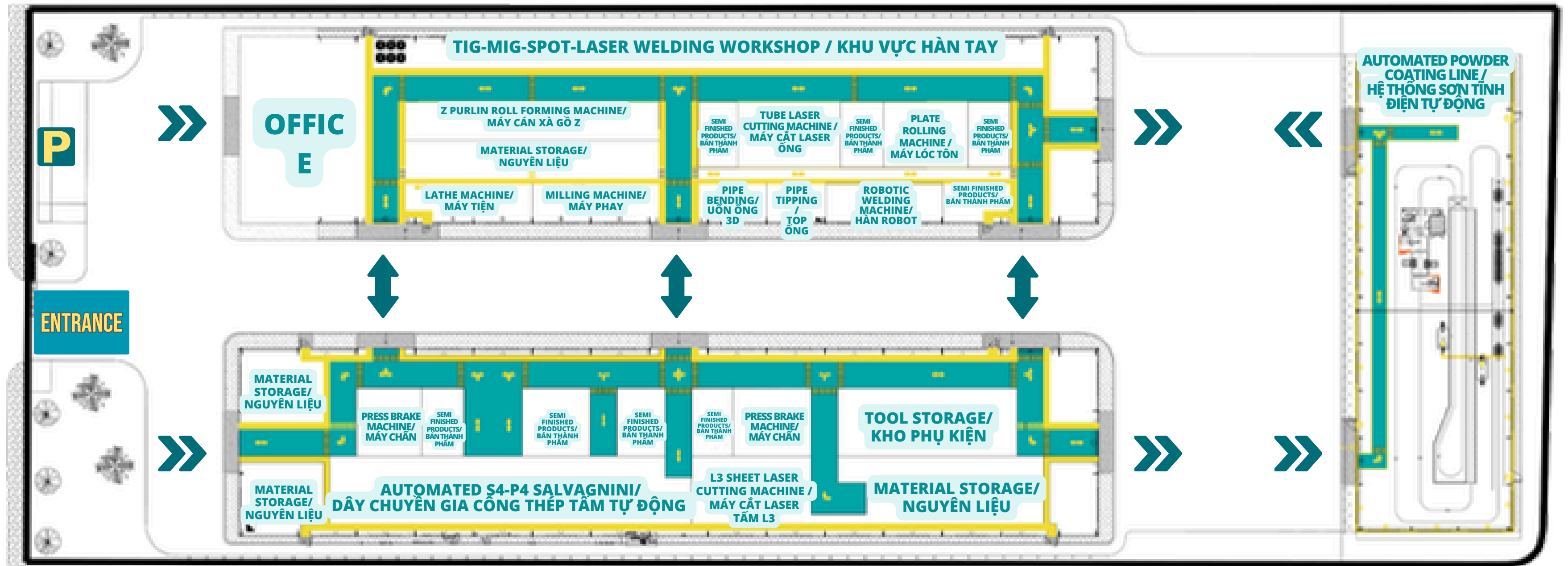
FACTORY CHART



BAC LIEU FACTORY

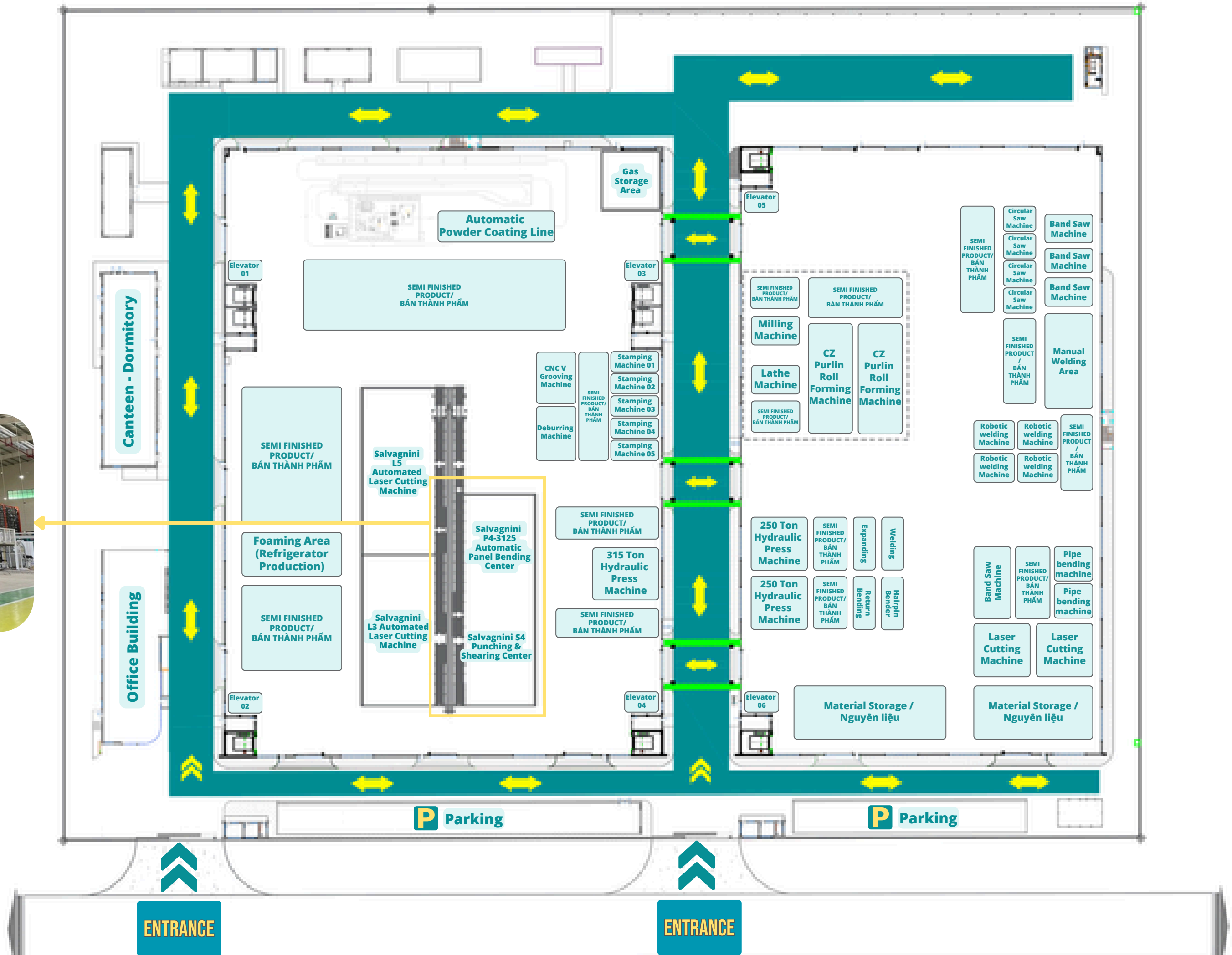
LAYOUT

Factory area: 15,000 m²



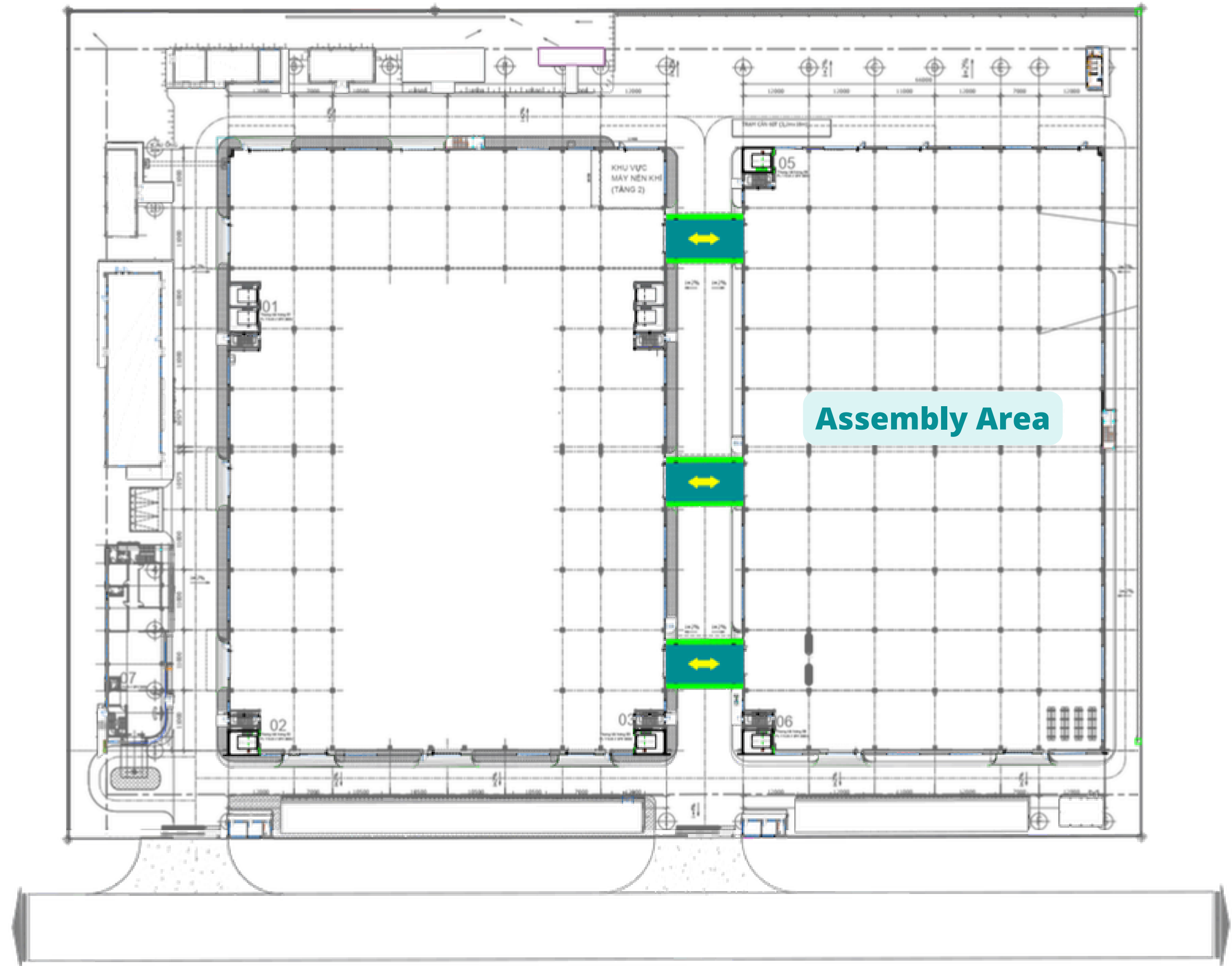
BA RIA VUNG TAU FACTORY LAYOUT

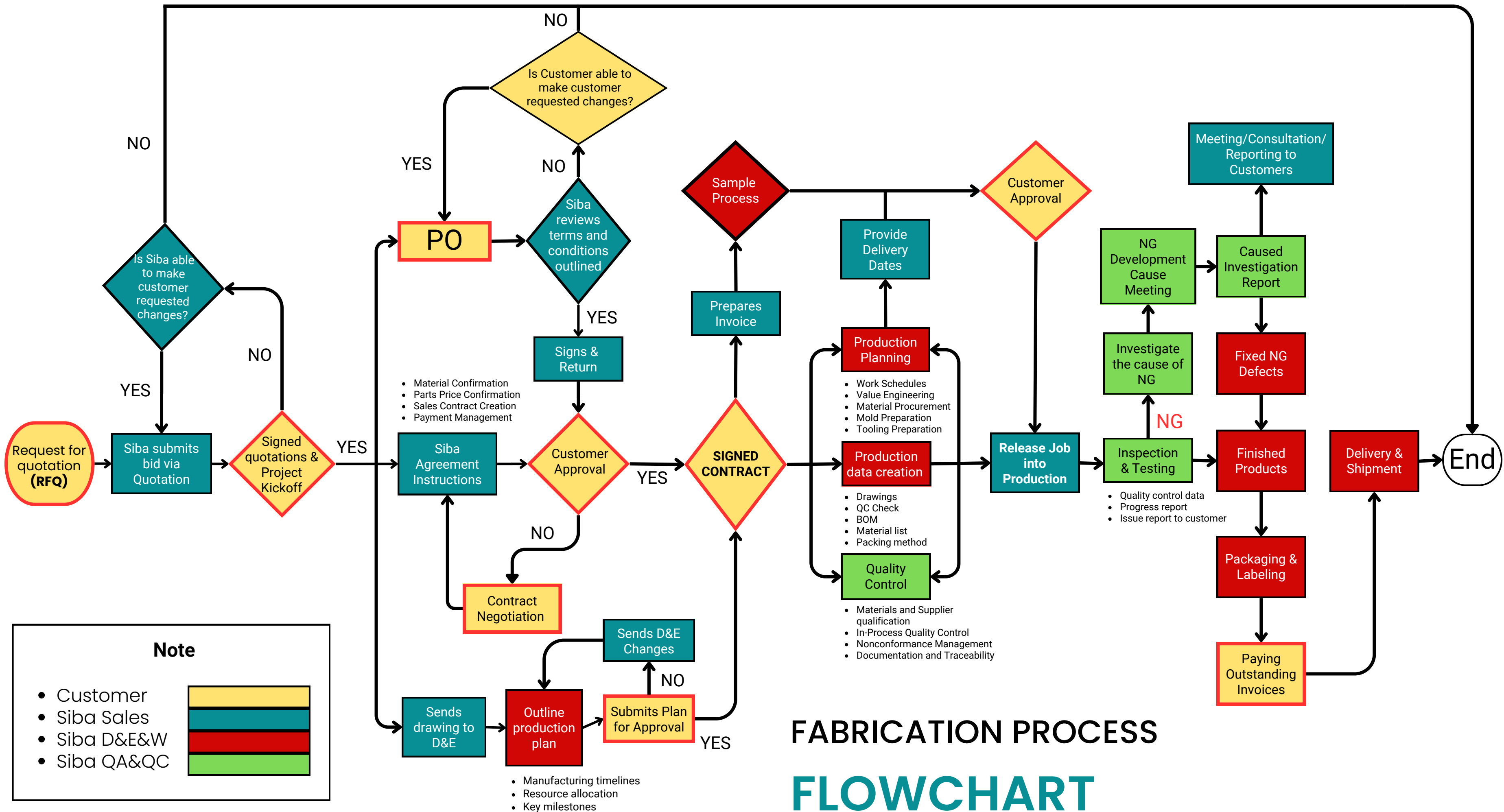
Factory area: 30,000 m²
(Ground Floor)



BA RIA VUNG TAU FACTORY LAYOUT

Factory area: 20,000 m²
(1st Floor)

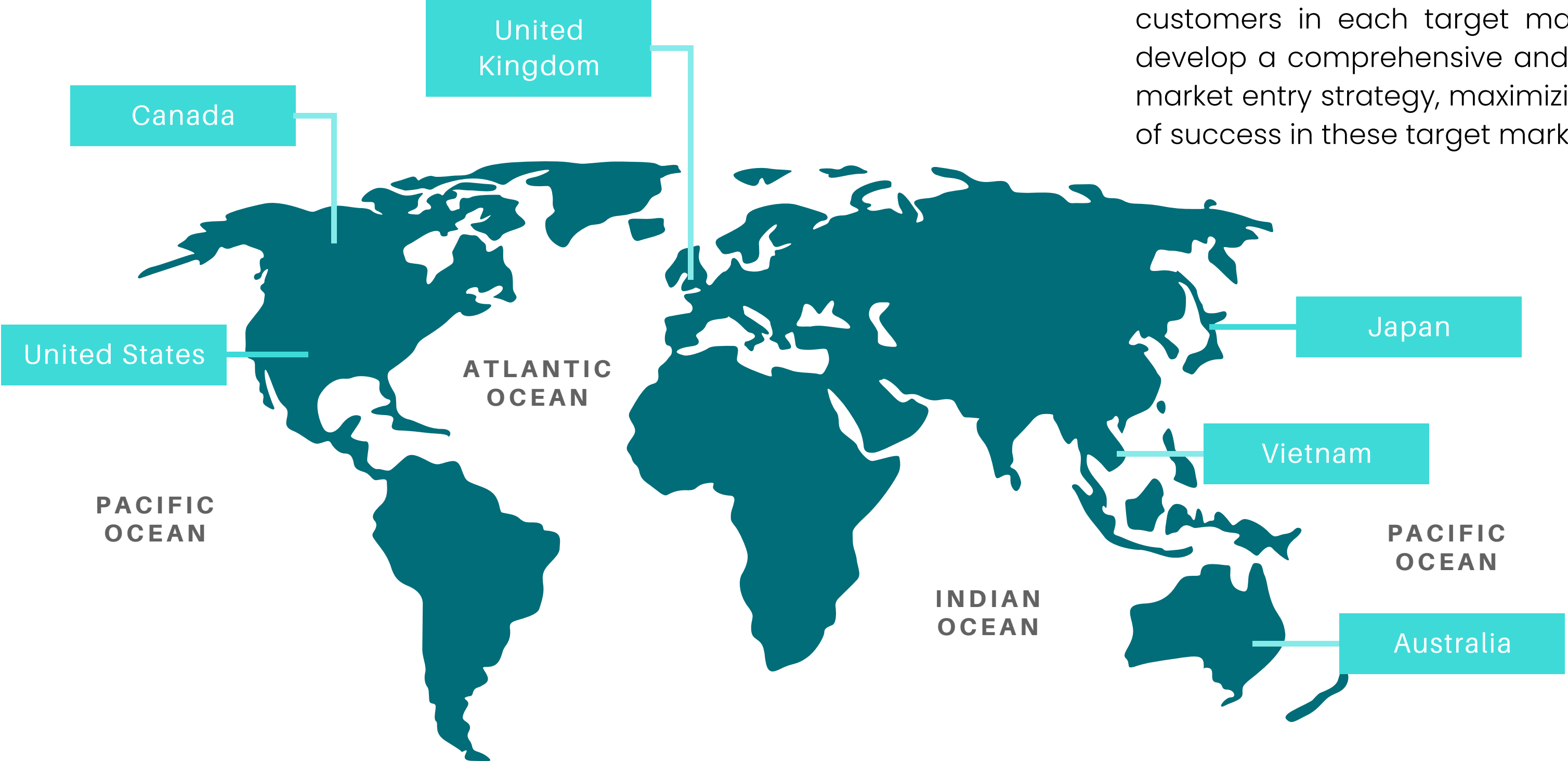




FABRICATION PROCESS FLOWCHART

TARGET MARKET

Understanding the specific requirements, industry standards, and delivery timelines of customers in each target market, Siba can develop a comprehensive and well-informed market entry strategy, maximizing its chances of success in these target markets.



ISO 9001 | ISO 14001 | ISO 45001

CERTIFICATE



Siba Group was inspected and recognized for meeting international quality standards
ISO 9001:2015 – Quality management systems
ISO 14001:2015 – Environmental management systems
ISO 45001:2018 – Management systems of occupational health and safety



MANAGEMENT TECHNOLOGY

SAP SYSTEM



Siba has successfully implemented SAP – a leading ERP system, across many industrial manufacturing operations.

This is a comprehensive solution suitable for manufacturing companies. All of the company's operations and activities will be integrated into a single system, and data will be logically systematized. With high-speed analysis capabilities, it allows for rapid collection and processing of data.



OUR SERVICE

We carry an advantageous industry position with both size and scalability, experienced staff and engineers, modern fabrication technology, and automation that'll help both projects' bottom line and timeline.

Some of our capabilities include: tower-fed fiber lasers, robotic and manual welding cells, automated punching & stamping machines, automated panel benders, CNC multi-axis press brakes, in-house powder coating, machining, finishing, and assembly.





MACHINERY EQUIPMENT

Siba Group owns a network of high-tech mechanical engineering plants equipped with a system of modern machinery and equipment imported from Europe.

**Automated
Salvagnini Italy Steel
Plate Fabrication Line
MV + SMD + S4 +
MCU + PCD + RIP +
P4 + SAP**



Salvagnini Flexible Smart Line (MV + SMD + S4 + MCU + PCD + RIP + P4 + SAP)

Our Salvagnini Flexible Smart Line integrates fully automated sheet loading, punching–cutting, sorting, rotation, and panel bending into one continuous flow. With the MV and SMD storage system, high-speed S4 Punch&Cut center, MCU dynamic buffering, PCD sorting, RIP turnover, and the universal-tool P4 panel bender, the line enables true JIT production with seamless changeovers and zero re-tooling.

This configuration minimizes WIP, reduces handling, improves material yield, and ensures consistent, high-precision panels. The result is a highly efficient, fully automated fabrication process that delivers fast throughput, high repeatability, and superior product quality.



Salvagnini S4 + P4 line – flexible manufacturing system

The S4 + P4 line is a highly automated flexible manufacturing system for sheet metal processing, integrating punching, shearing, separation, and bending into a single, continuous workflow. It enables fully automatic production from raw sheet to finished part, ensuring high efficiency, consistent quality, and minimal lead time.

With intelligent process control, the system optimizes material flow and balances workloads, supporting both batch production and high-mix, low-volume manufacturing with near-zero setup time—ideal for just-in-time and lights-out operations.

Salvagnini L3 - High Dynamic Fiber Laser Cutting

The L3 fiber laser cutting systems with electronic sources deliver reduced running costs and eliminate both optical path and laser gas. They feature an airplane-type structure that confers solidity and precision, and a head with a single optic for high-quality cutting over the entire range of materials.



B3 - Press Brake Salvagnini - Italy

B3 press-brake range delivers high degrees of productivity, accuracy and safety yet keeps consumption low. The high-dynamic (direct-drive) and KERS energy recovery systems achieve higher speeds and accelerations with the same consumption.

The ATA device installed on the B3 press-brake allows tool length to be changed and adjusted automatically, making bending of both batch one and parametric parts possible.



Salvagnini L5 - High dynamics fiber laser

The Salvagnini L5 is a high-precision fiber laser cutting machine designed to deliver exceptional productivity, flexibility, and cost efficiency. Equipped with a single laser head capable of processing a wide range of materials and thicknesses, it eliminates the need for multiple machines. Its advanced kinematics and carbon fiber structure enable dynamic motion with up to 5g acceleration, ensuring high accuracy and performance, especially for complex geometries. Integrated automation features, such as the Automatic Nozzle Changer (ANC), support unattended operation and maximize production efficiency.

OTC Daihen Welding Robot Japan



Tube Laser Cutting Machine

3D Tube Bending Machine



**CNC Milling
Machine
Doosan DNM**



**CNC Turning
Machine
Doosan Puma**

CEMB Dynamic Balancing Machine - Italy



Plate Bending Rolls DAVI MCA 3028

Yadon JH21-250 Mechanical Power Press



Laser Tube Cutting Machine Han's Laser TS6220



Sheet Metal Deburring & Polishing Machine NVD

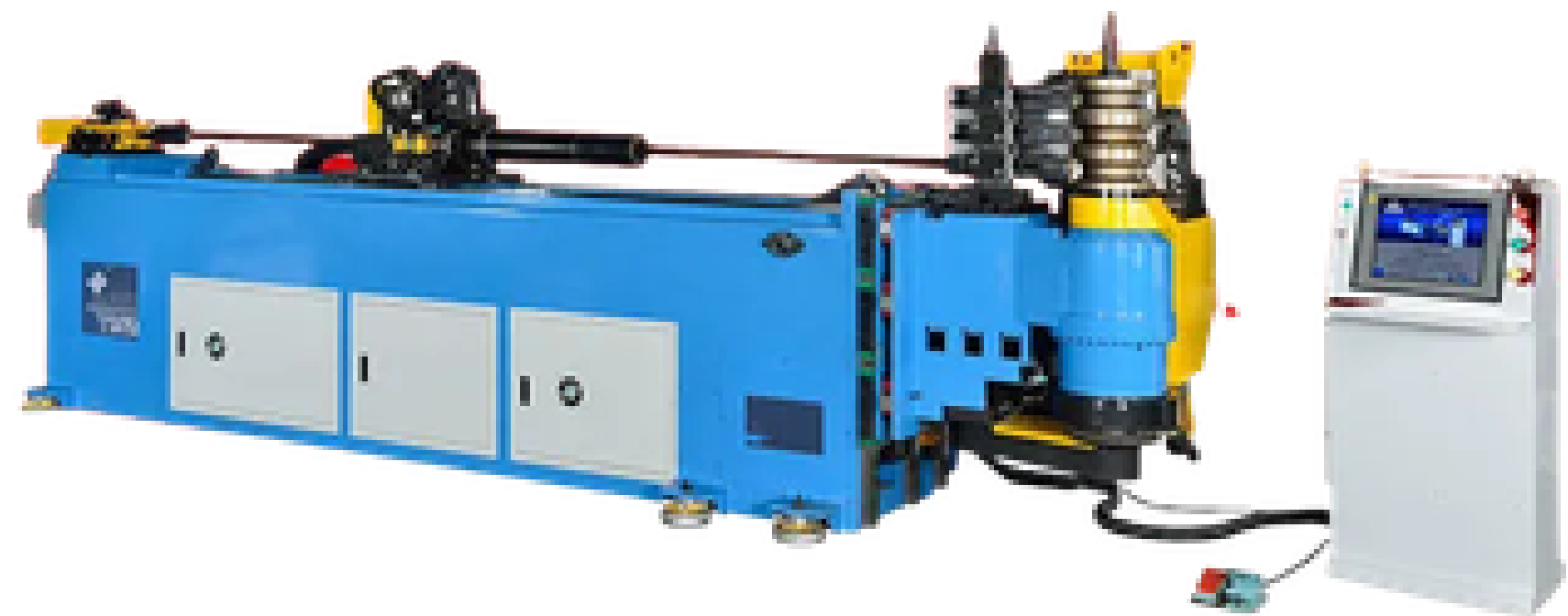
Industrial Welding Robot



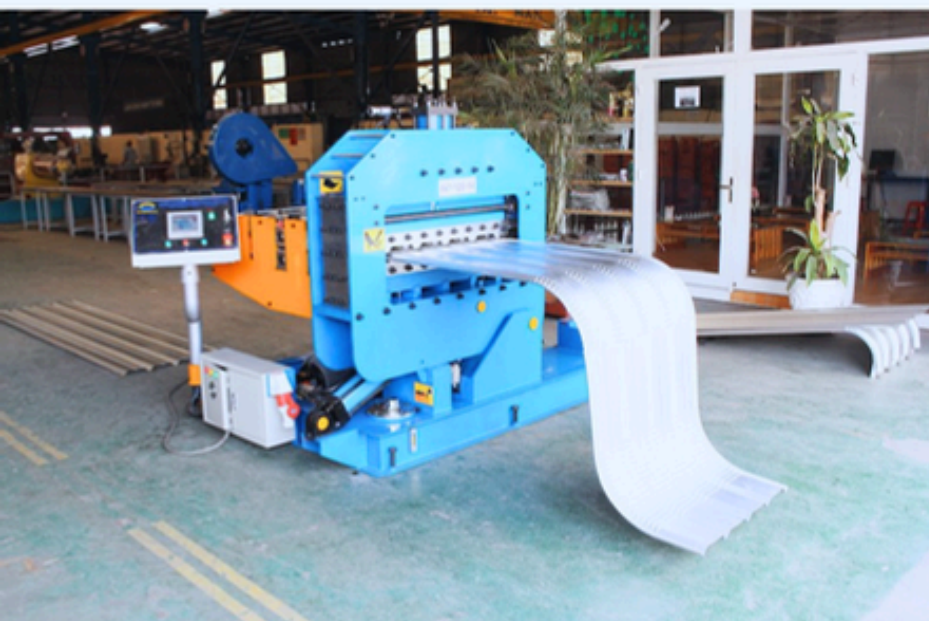
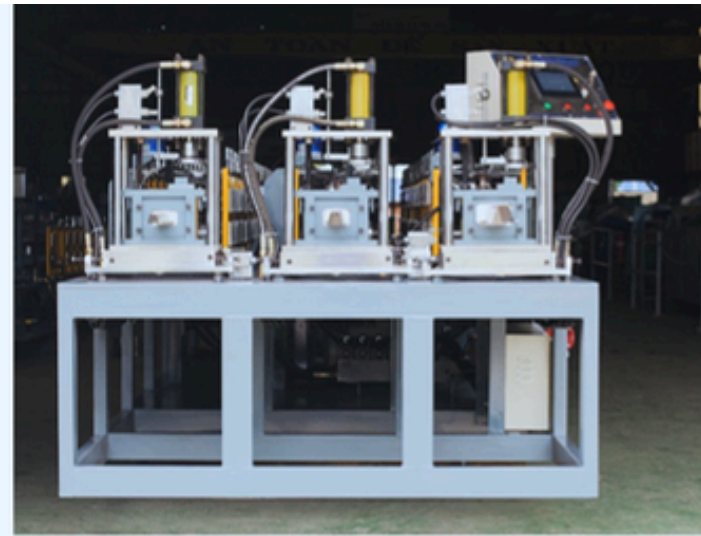


**Horizontal Band Saw Machine
330B CNC**

**CNC tube bending machine
GMACC**



Machines for steel framing production





Powder Coating Lines



salvagnini

L3

INDUSTRIES SERVED

With a focus on innovation, quality, and customer satisfaction, Siba Group is well-positioned as a trusted partner for companies seeking reliable, high-performance OEM sheet metal fabrication.



Steel Coil (0.5-0.8mm)



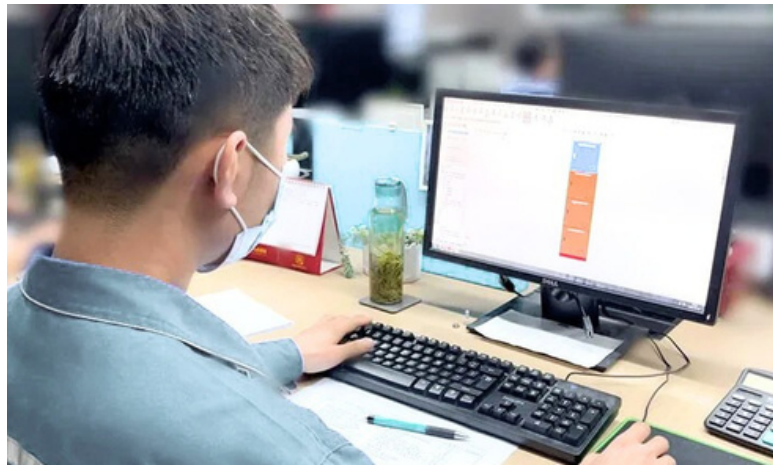
Color Confirmation



Vent Confirmation



Lock Confirmation



Drawing Confirmation



Production



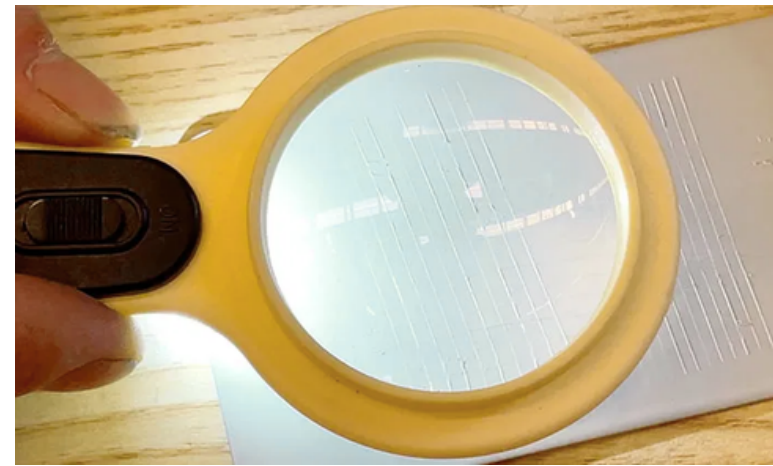
Powder Coating



Stacking



Inspection



Grid Test for Adhesion



Trial Assembly Test



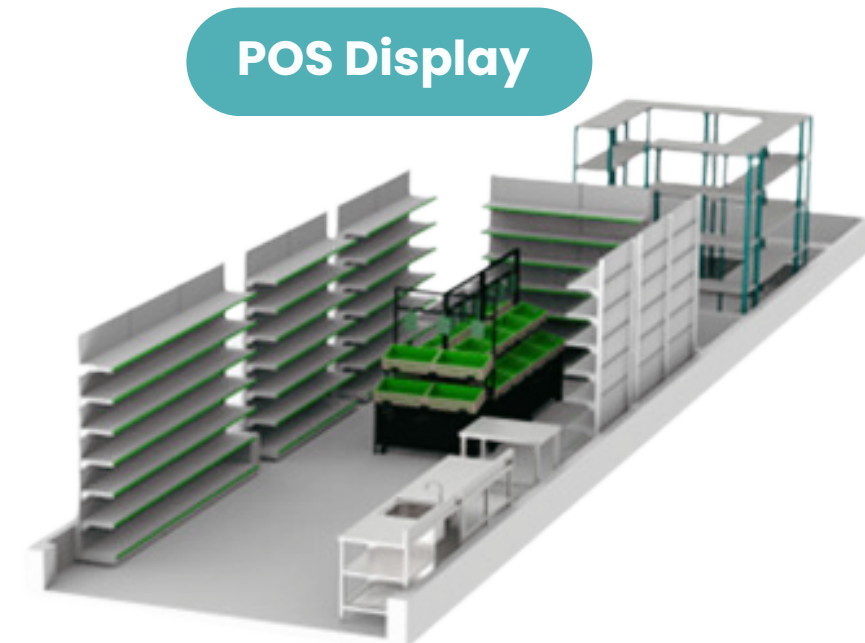
Packaging

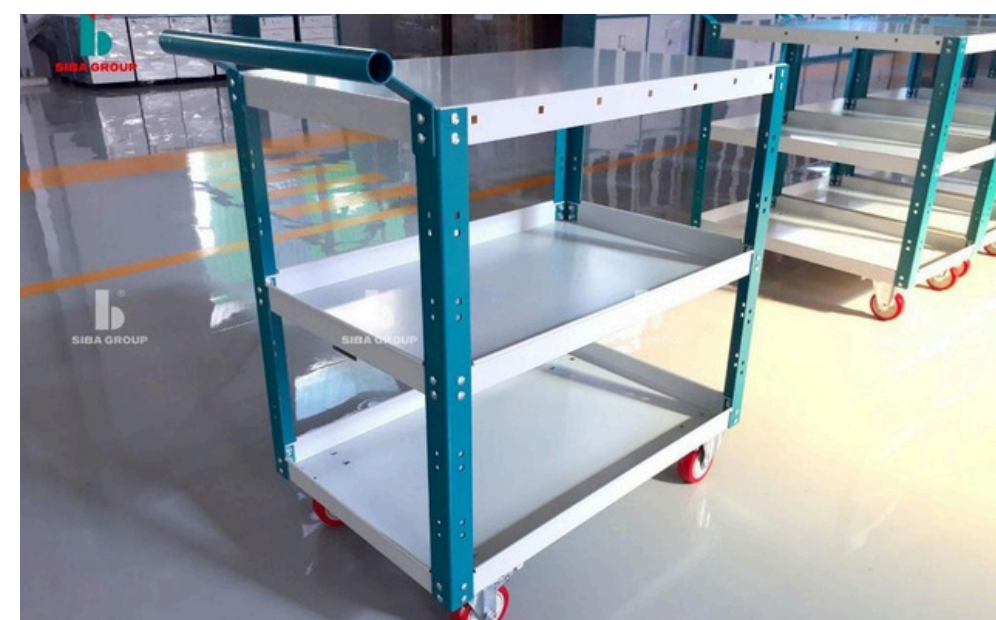
FURNITURE & HOUSEHOLD APPLIANCES

Siba Group has experience manufacturing finished furniture and household appliances for members and partners within our business group.

Our product series includes a wide range of steel furniture.

In addition to our product series, we also offer ODM and OEM services to cater to the unique requirements of our clients.





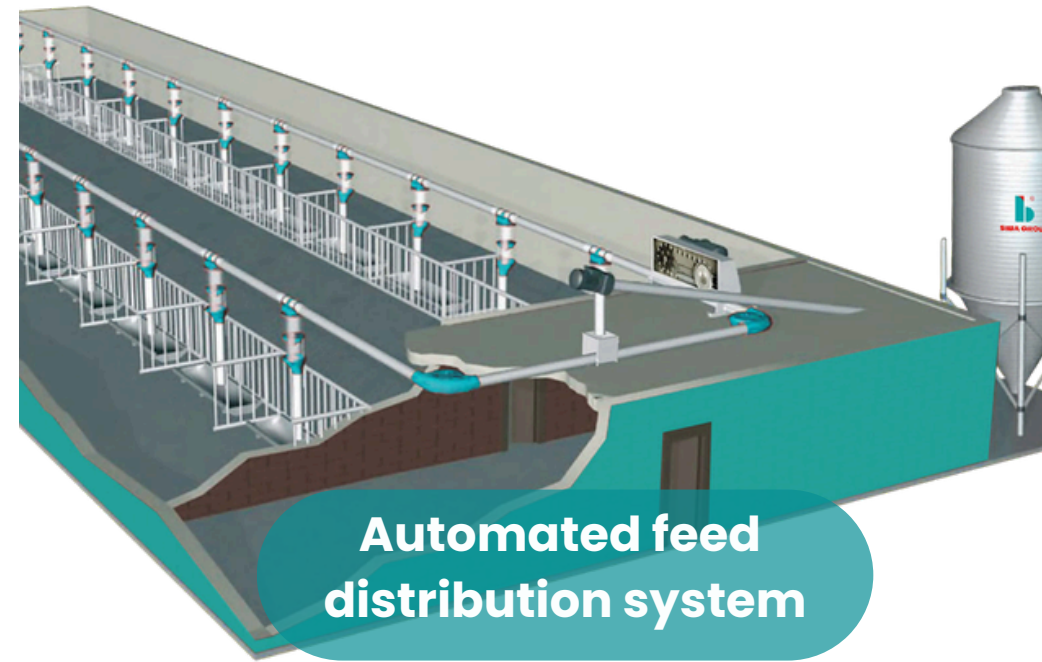
FURNITURE & HOUSEHOLD APPLIANCES

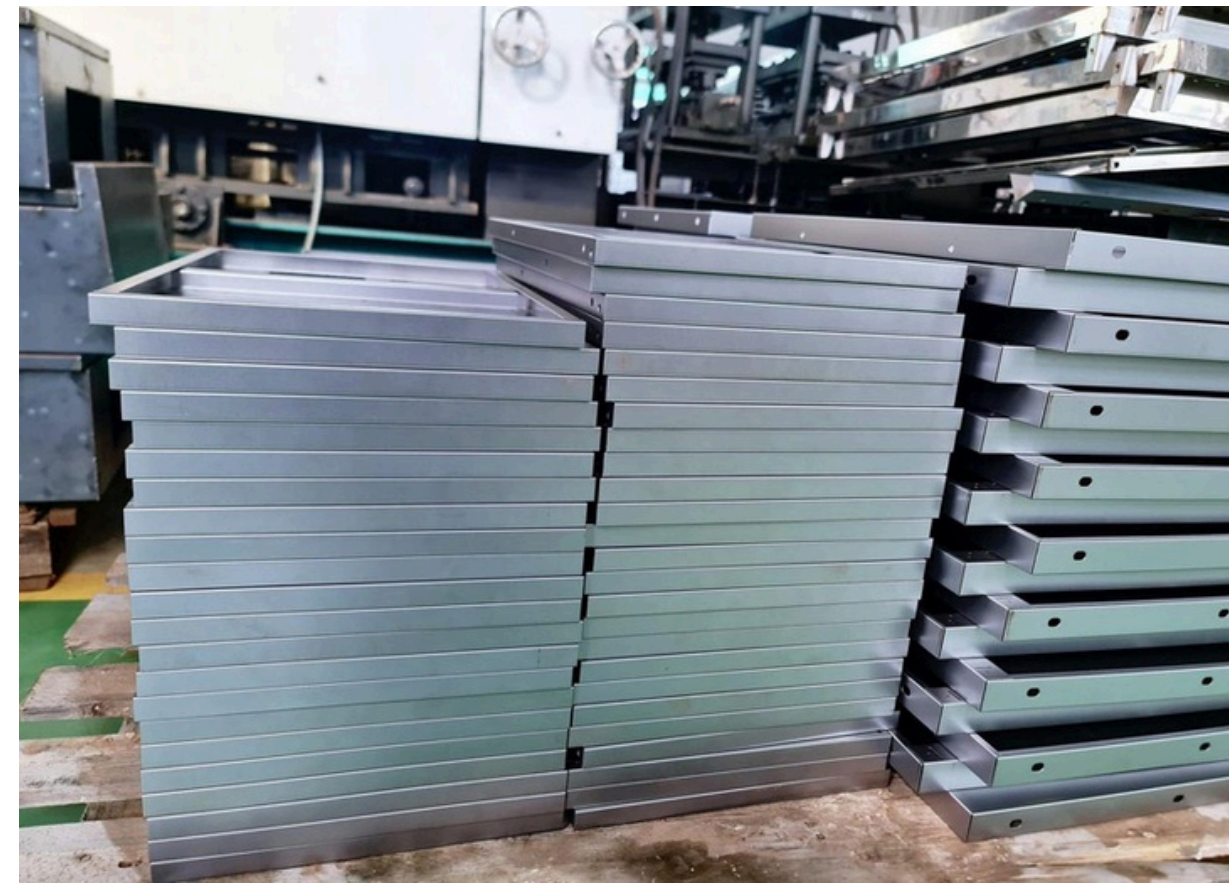
PIG BREEDING FARM FABRICATION

Siba has established a dedicated pig breeding farm as part of our industrial operations.

This allows our partner to raise and breed pigs for various commercial and agricultural purposes, including specialized housing, automated feeding systems, climate-controlled housing, disease prevention protocols, and other advanced techniques.

Siba's expansion into pig farming fabrication further demonstrates our diverse industrial manufacturing expertise and willingness to venture into adjacent sectors, strengthening our overall business resilience and market positioning.





FARM FEED STORAGE FABRICATION



PIG BREEDING FARM FABRICATION



ORGANIC COMPOSTING TOWER

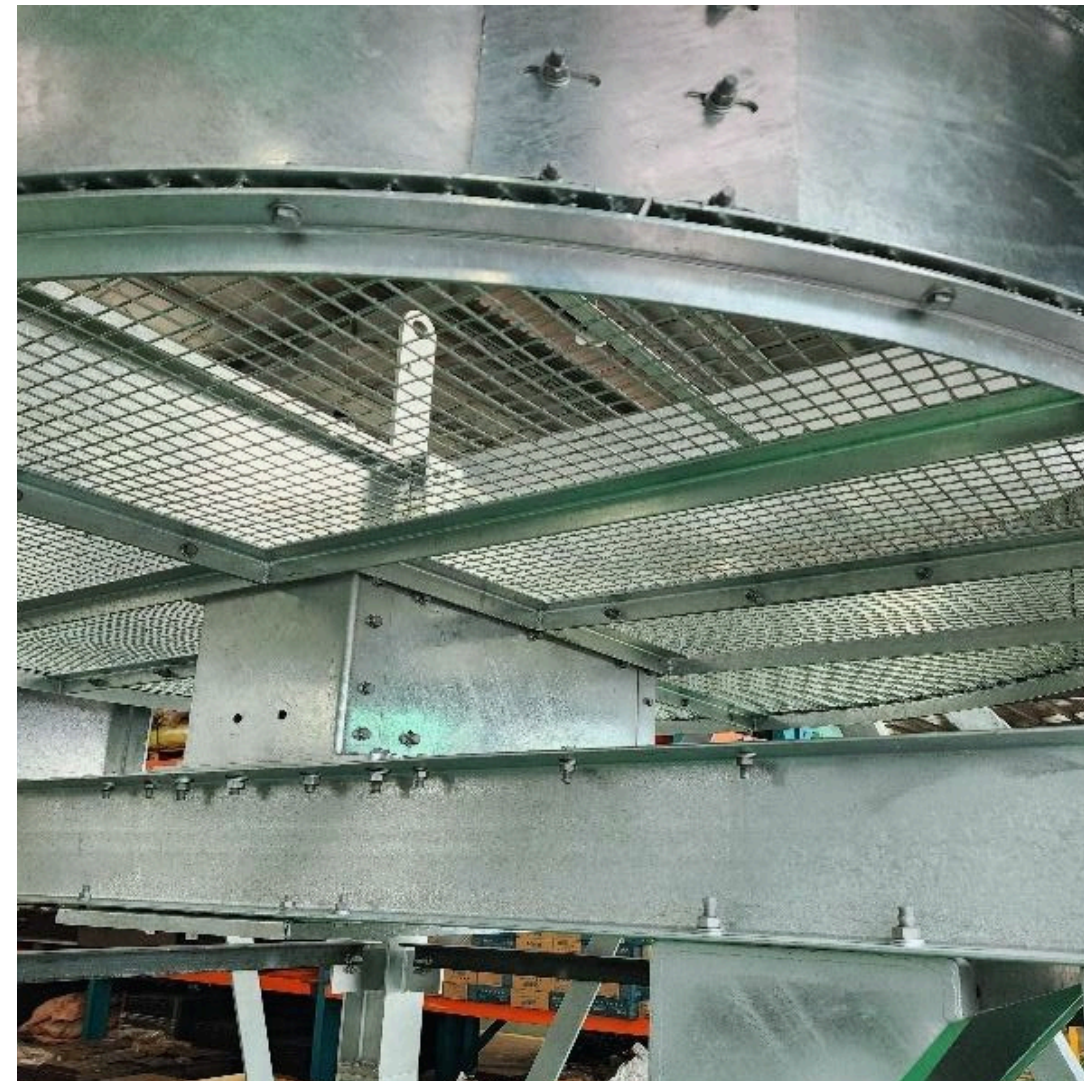
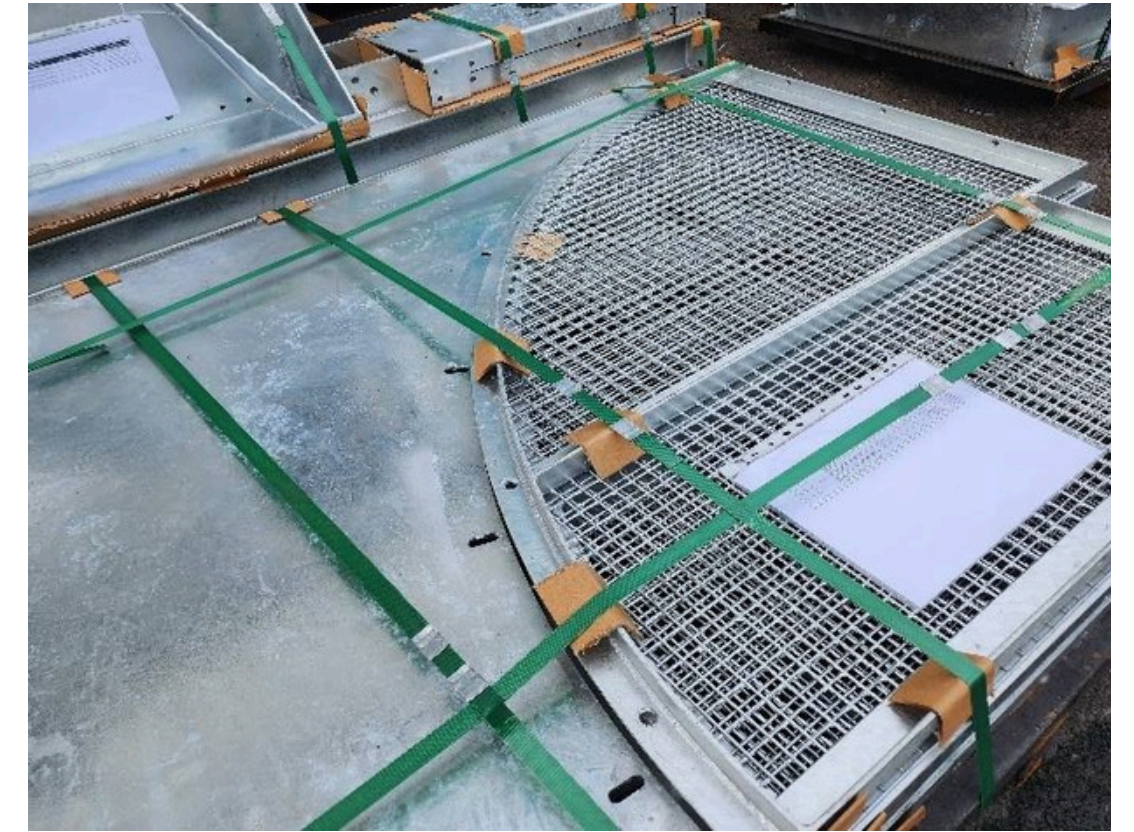
OEM PROJECT

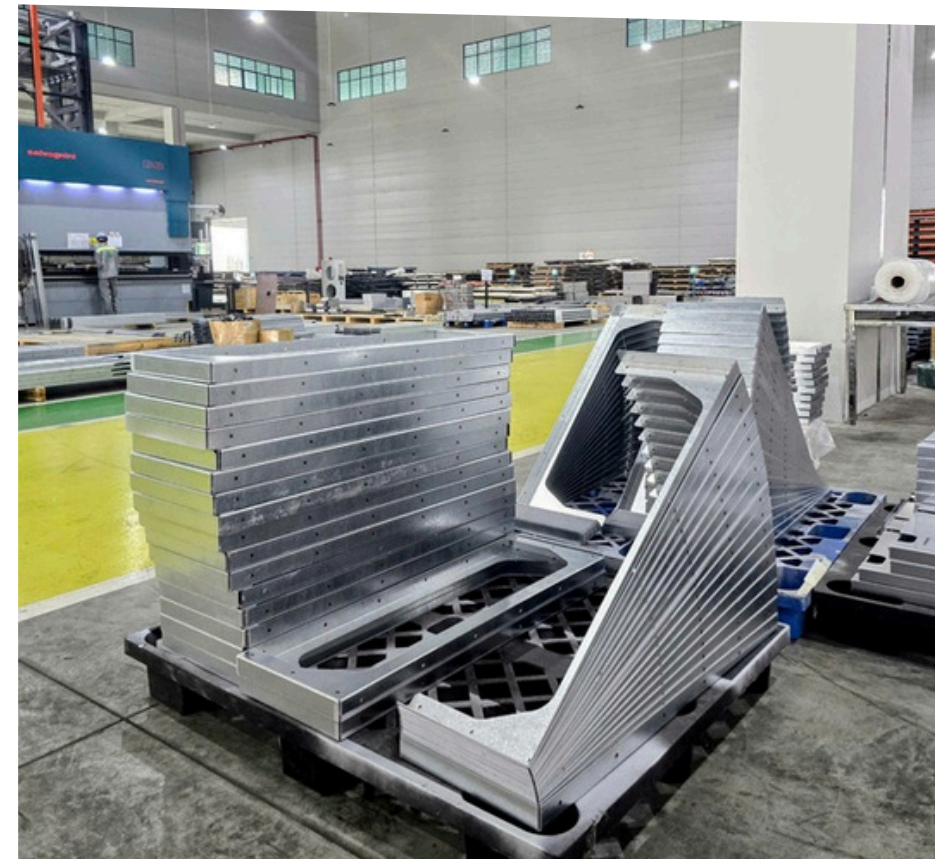
Siba has the capability to produce wide range of OEM product, including machine frame, pallet, etc. This includes both OEM the structural sheet metal components as well as the fully assembly.



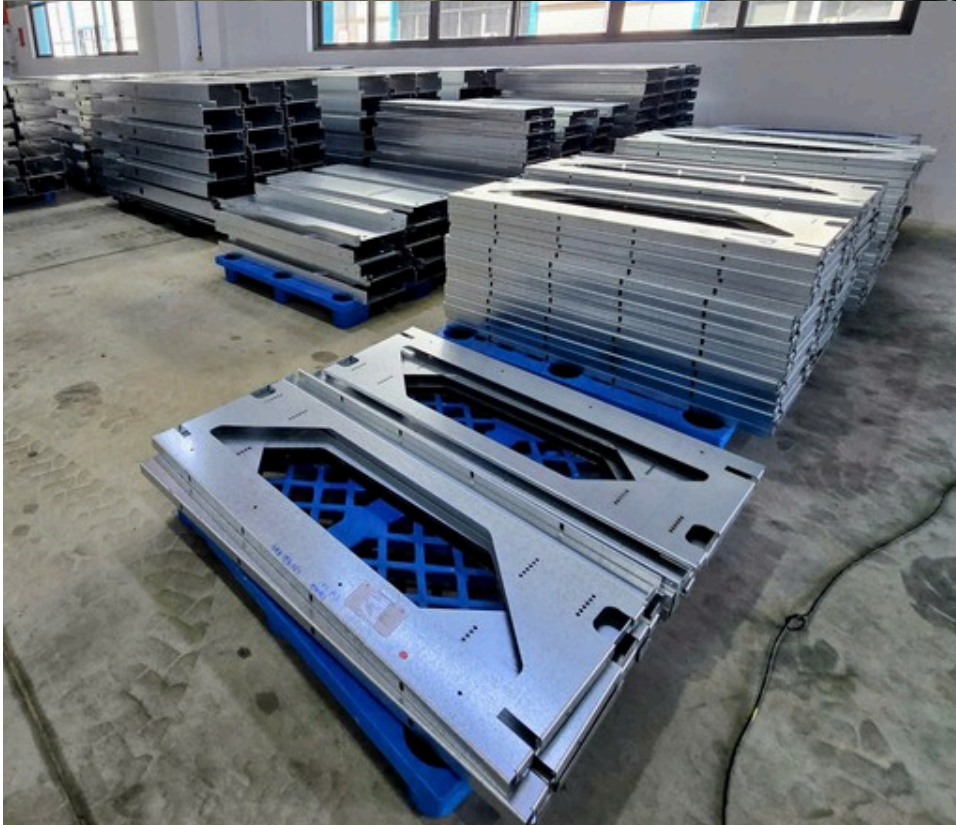
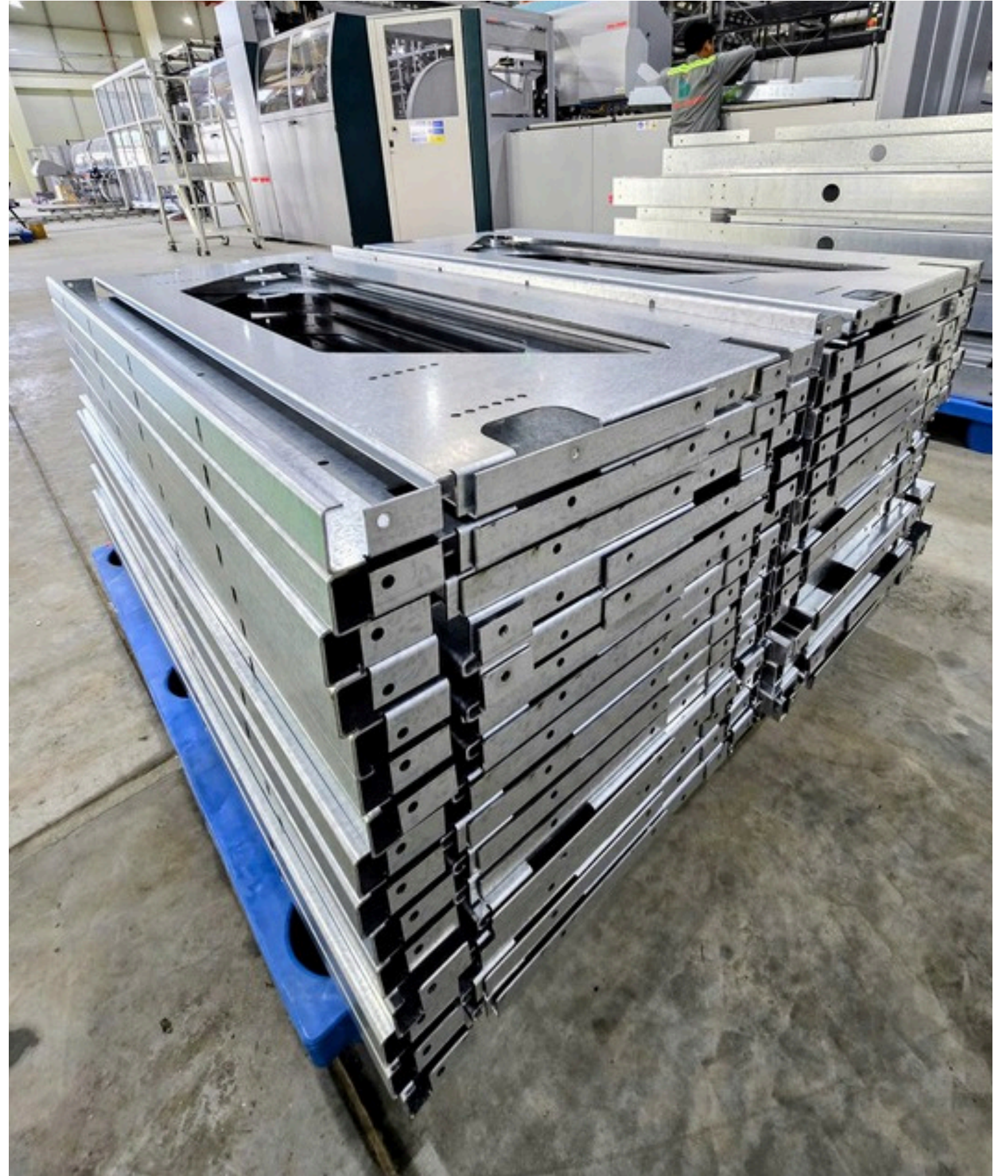
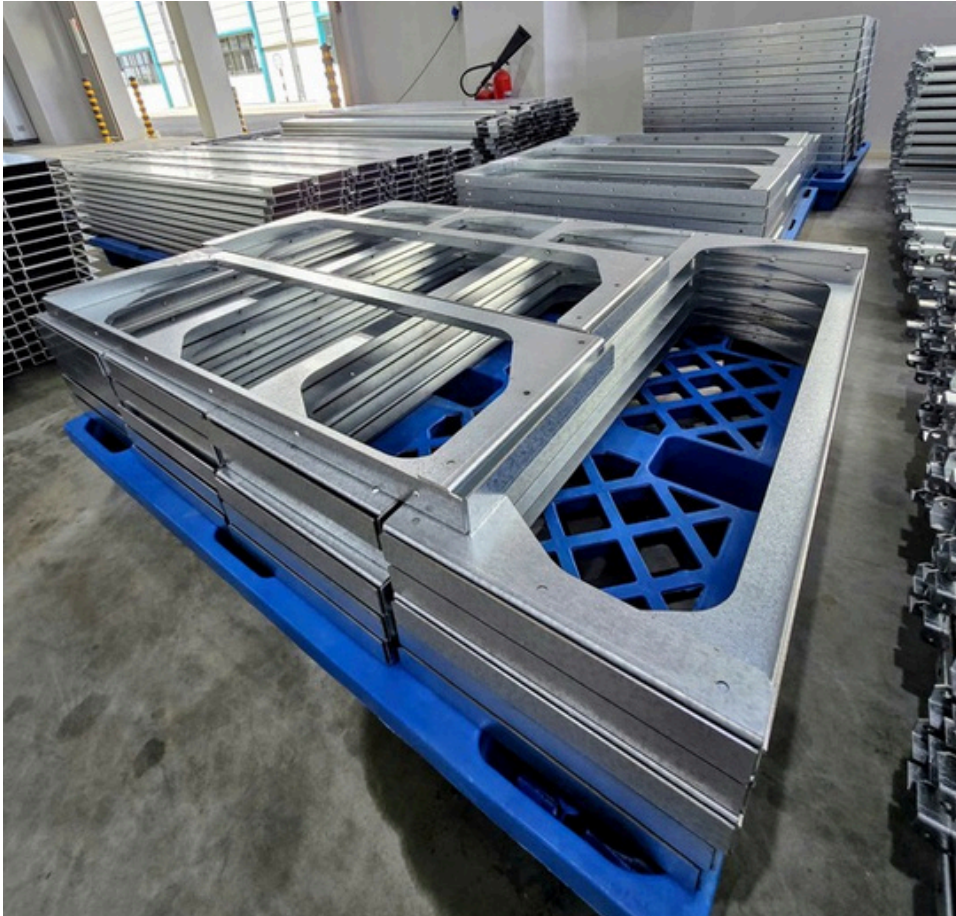
SIBAINDUS

Next-Gen Fabrication Solutions





OEM PROJECT



OEM PROJECT

ELECTRIC Cabinet & Server Rack

Siba has the capability to produce OEM electric cabinets and server racks. This includes both OEM the structural sheet metal components as well as the fully assembly.

These expanded manufacturing capabilities allow us to serve a wider range of industries and customers.



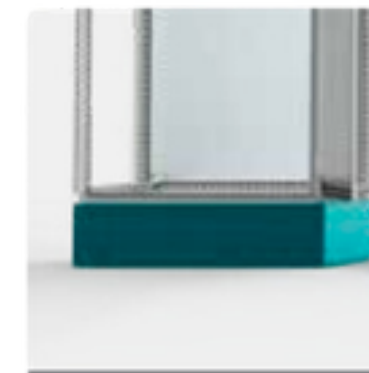
Mounting Plates



Profiles



Roofs,
Bottom Plates



Fixation



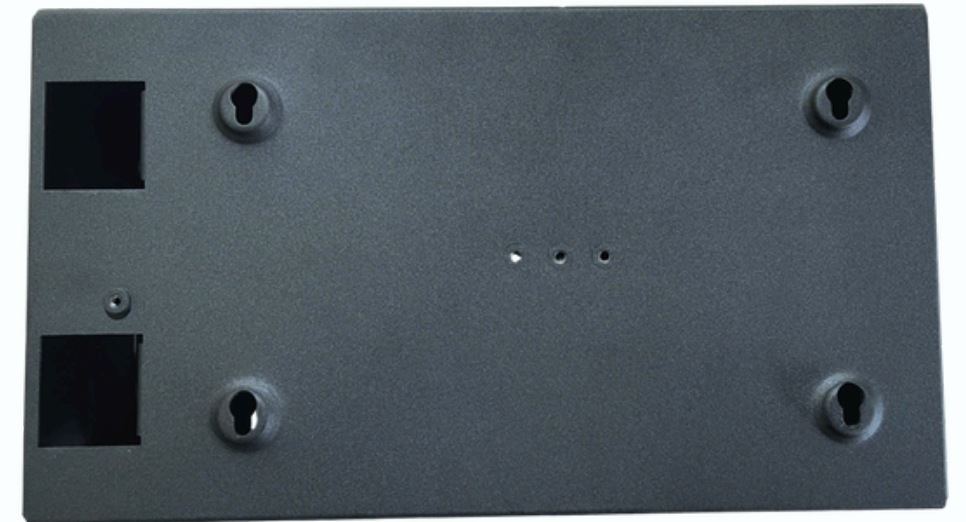
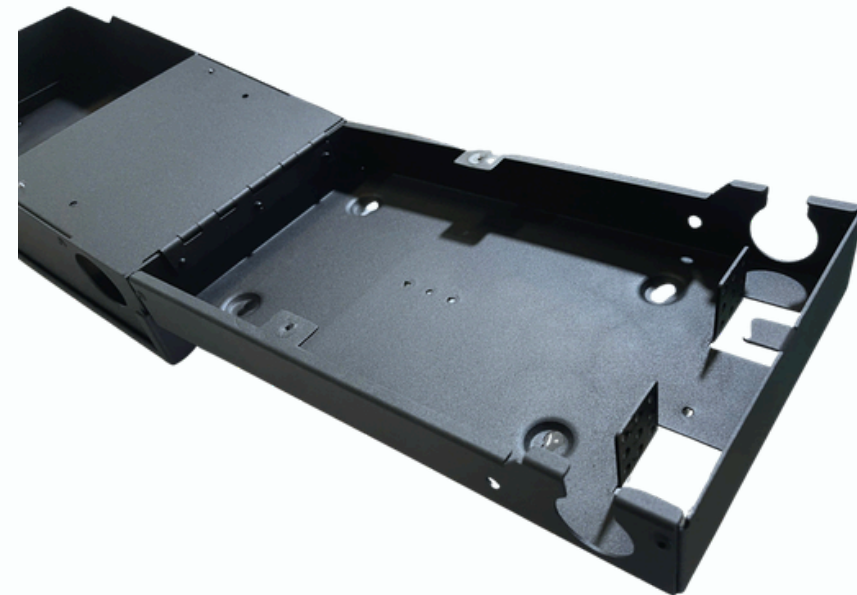
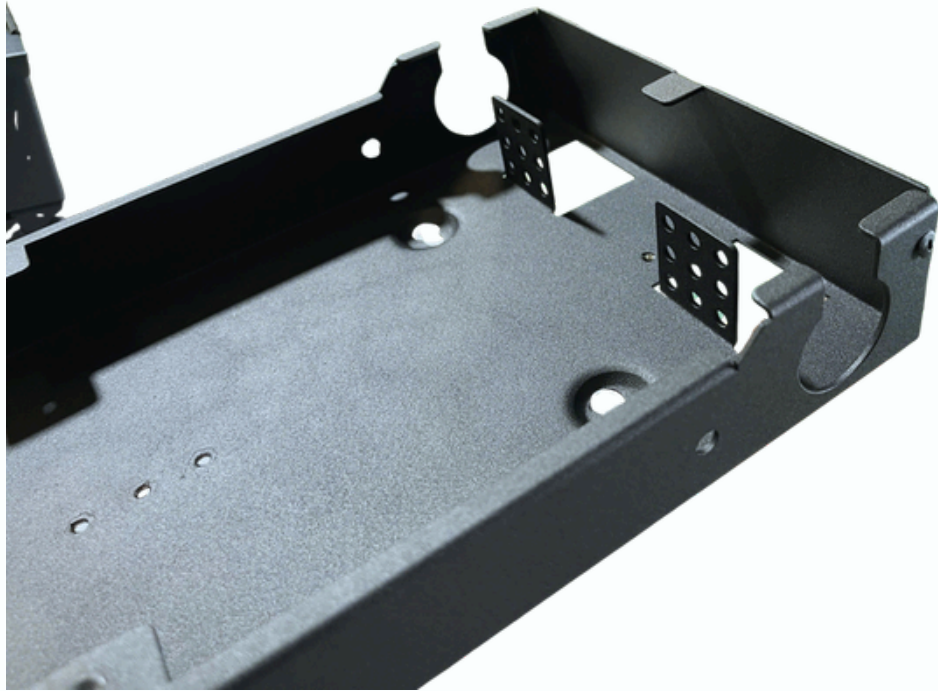
Doors



Electric Cabinet & Server Rack



Electrical Enclosures



Electrical Enclosures

HVAC SYSTEM

Siba's OEM HVAC division employs a team of experienced mechanical engineers, HVAC specialists, and production technicians. They utilize the latest 3D modeling and simulation software to design efficient, high-performance HVAC systems tailored to each customer's requirements.

The company's manufacturing facilities are equipped with advanced fabrication tools and quality assurance processes to ensure the production of durable, reliable HVAC equipment.

Key areas of expertise within Siba Group's OEM HVAC offerings include:

- Custom air handling unit (AHU)
- Chiller and cooling tower systems
- Ventilation and air distribution equipment
- Building automation and control integration
- After-sales service and technical support



Custom air handling unit (AHU)



Chiller and cooling tower systems



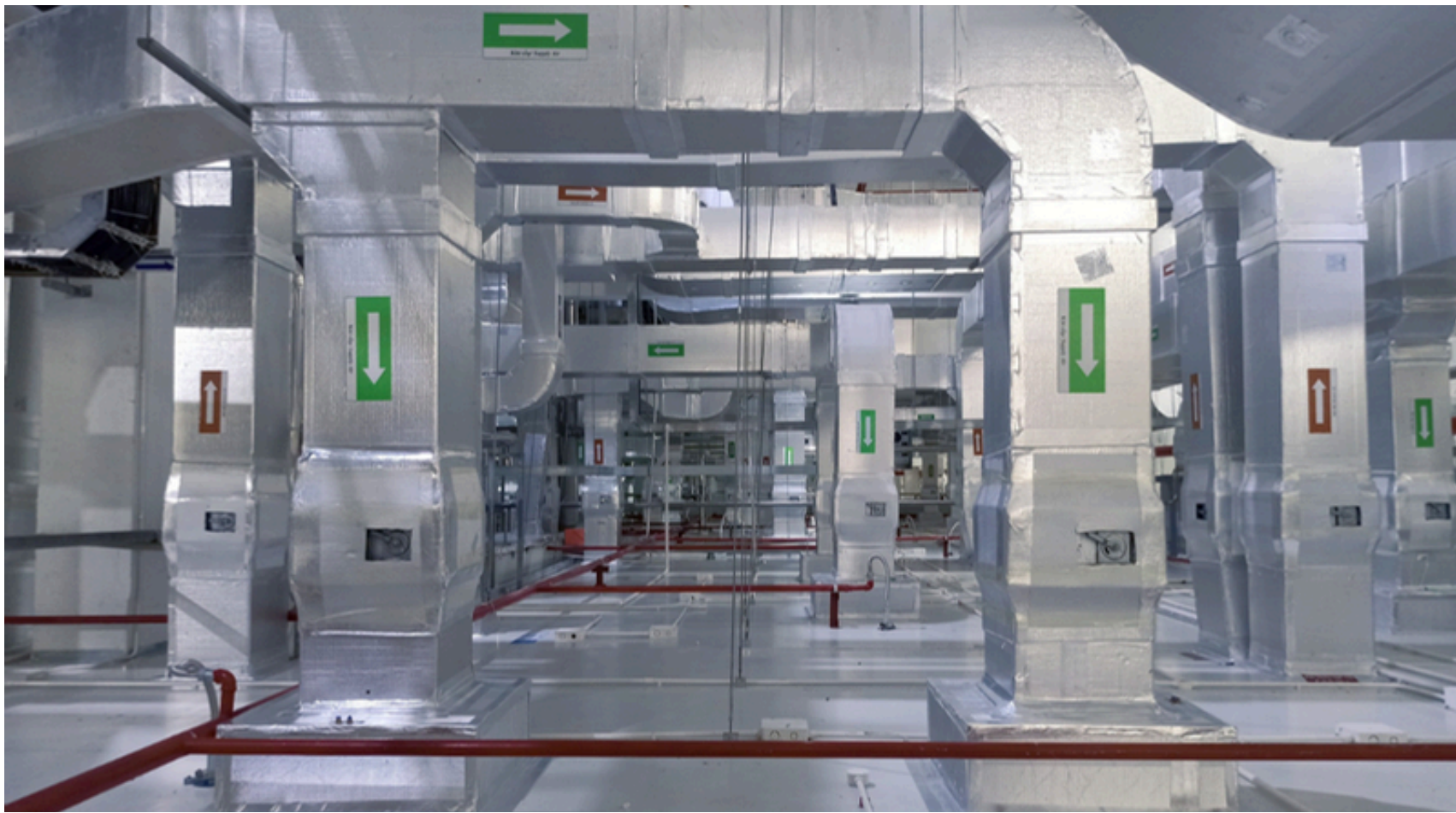
Ventilation & Air distribution equipment



Building automation & Control integration



After-sales service & Technical support



HVAC Ducting & Structure



SIBAINDUS

Next-Gen Fabrication Solutions

THANK YOU!

SIBAINDUS – YOUR TRUSTED PARTNER IN NEXT-GEN FABRICATION SOLUTIONS.



SIBA HIGH-TECH MECHANICAL GROUP JSC

Headquarter: 99A1 Cong Hoa Street, Tan Son Nhat Ward, HCMC.

Tax ID: 0313140100 | Email: info@siba.com.vn | Website: sibaindus.com

Office: 7F, Vista Tower, 628C Vo Nguyen Giap, An Khanh Ward, HCMC.

Factory 1: Lot E9, Tra Kha IP, N2 Street, Bac Lieu Ward, Ca Mau Province.

Factory 2: Lot 28, Chau Duc IP, Nghia Thanh Commune, HCMC.